

JOB DESCRIPTION

1. JOB INFORMATION

JOB TITLE: Maintenance Manager

BAND: 3

DEPARTMENT: Engineering

REPORTS TO: Engineering Manager

LOCATION: Kitchen Range Foods – Huntingdon & Peterborough site

2. JOB PURPOSE

Key responsibilities will be to ensure site production and ancillary equipment is fully functional to meet the needs of the food manufacturing facility, through robust preventative / planned maintenance / condition monitoring and process control systems. To also ensure statutory compliance is managed to meet relevant legal requirements and to use effective continuous improvement methods to continually improve site efficiencies.

Delivering through the team and team capability and development Industry best practice, world class manufacturing, and retailer codes of practice.

Continuous improvement Champion.

Leadership of the engineering team and member of the Factory senior team.

Budget responsibility.

3. RESPONSIBILITIES

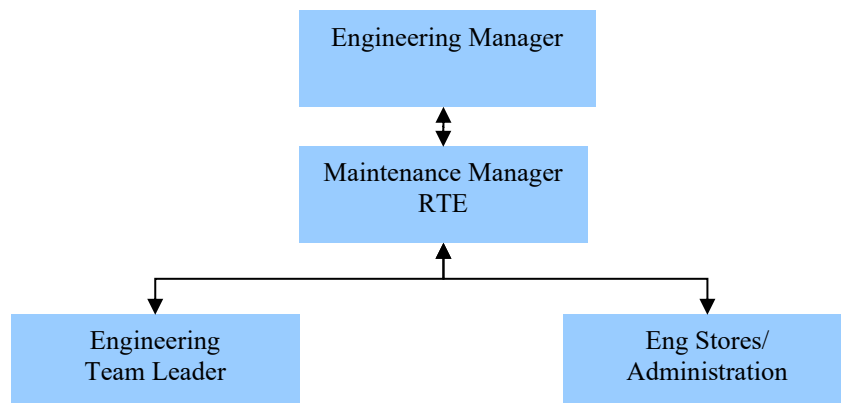
3.1 FINANCIAL

Assist with the management of site engineering function and budgetary control.

3.2 STAFF

Direct reports - Engineering Team Leaders / engineering stores and administration

3.3 ORGANISATIONAL STRUCTURE / REPORTING LINE



4. DUTIES/ RESPONSIBILITIES

- Experience with the management of Mechanical Integrity Programs.
- Maximise the team contribution through targeted technical support and timely implementation of projects in partnership with the Operations and Maintenance organisations.
- Ability to assess the Moy Park programs at the sites and develop and implement improvement plans.
- Prepare and distribute monthly reports with key actions for improvement.
- Maintenance improvement programs.
- Maintenance System Knowledge.
- Responsible for ensuring all procurement and sub-contract documents meet statutory and corporate requirements and deliver the best value solution for the business.
- Develop key QSHE, housekeeping and productivity targets for the Dept and ensure that these are met.

JOB DESCRIPTION

- Ensure compliance with the Management of Change Process including appropriate technical authorisations.
- Responsible for the planning and efficient execution of the programme spend budget along with minor design led maintenance work.
- Develop and maintain professional working relationships with all engineering personnel, stakeholders, supporting functions, vendors, contractors and other third parties
- Ensure that all Engineering personnel are adequately trained, supervised, motivated and developed to meet the on-going needs of the business and ensure that active succession plans are in place for the future. (including management of contractors)
- Knowledge of Global regulatory requirements.
- Responsible for development and effective management of the 5 year Capital Plan, aligned with the site and Corporate requirements and expectations.
- Responsible for the effective management of approved Capital projects to meet objectives in terms of budget, delivery to plan and successful delivery of the project intent, demonstrated through a comprehensive set of agreed KPIs.
- Responsible for the development and effective management of the Engineering Dept controllable cost budget for Kitchen Range Foods.
- Responsible for the safe and cost-effective overhaul of all assets in accordance with statutory, corporate and site QSHE requirements.
- To monitor and control any negative environmental impact arising from the processes within area of responsibility; ensuring that all direct reports and colleagues are briefed and clear in regards to their responsibilities as outlined in the Moy Park Group Risk Management System Manual.

5. MEASURABLE OUTPUTS

- Results orientation
- Driving & Managing Teamwork
- Communication Effectiveness
- Role Model
- Systemic Thinking
- Driving Improvement in others
- Personal strength & maturity
- Delegation
- Empowering Others
- Succession Planning
- Customer orientation
- Impact and influence
- Technological Orientation
- Retailer codes of practice/ technical standards

6. KNOWLEDGE, SKILLS AND EXPERIENCE REQUIRED

Essential	Desirable
<ul style="list-style-type: none"> • Engineering Management Experience within a continuous manufacturing process environment; preferably food manufacturing • 2nd level education preferably in Engineering – minimum • Excellent written and verbal communication skills • Excellent relationship-building and influencing skills, across all organisational levels 	<ul style="list-style-type: none"> Business Financial Competency Knowledge of EPMP IT Skills Engineering Standards Project Management Knowledge of HSE regulations Knowledge of SHE Process Hazard Analysis (PHA) techniques Root Cause Analysis (RCA) techniques

JOB DESCRIPTION

<ul style="list-style-type: none"> • Proven capability and experience in managing, developing and motivating multi-discipline teams • Proven capability and experienced in managing effective outcomes within a matrix structure • Proven capability and experienced in managing conflicting priorities • Demonstrated effective use of and adherence to legislative Process Safety systems and procedures • Proven knowledge and understanding of process design, specification and commissioning procedures • Comprehensive relevant experience in the Engineering industry • Proven Change Management and facilitation skills • In-depth knowledge of project and programme management tools and techniques, and the ability to demonstrate value from their effective deployment • Sound knowledge of current legislation, statutory and engineering standards requirements: in particular CDM, Pressure Systems, Lifting Equipment/Operations and British Engineering Standards. • Solid grasp of commercial issues, including contract structures and commercial monitoring processes to ensure value is delivered. • Computer literacy (MS Office, SAP) 	
-------------------------------------------------------------------------------------------------------------------------------------------------------------------------------------------------------------------------------------------------------------------------------------------------------------------------------------------------------------------------------------------------------------------------------------------------------------------------------------------------------------------------------------------------------------------------------------------------------------------------------------------------------------------------------------------------------------------------------------------------------------------------------------------------------------------------------------------------------------------------------------------------------------------------------------------------------------------------------------------------------------------------------------------------------------------------------------------------------------------------------------------------------------------------------------------------------------------------------------------------------------------------	--

	DATE:
JOB HOLDER:	
MANAGER:	
HUMAN RESOURCES MANAGER:	

Note:

This description is intended to be a guide of what duties are most likely but should not be taken as a definitive list. Moy Park reserves the right to vary duties and add duties as they see necessary.